

Catalog & Cable Trunking Guide

HDMANN[®]
cable management system



Single-Compartment Trunking

Trunking Size (mm) Width x Depth	Product Code	
	3m Length	2m Length
50 x 25	TL3/21	TL2/21
50 x 40	TL3/240	TL2/240
50 x 50	TL3/22	TL2/22
75 x 25	TL3/31	TL2/31
75 x 40	TL3/340	TL2/340
75 x 50	TL3/32	TL2/32
75 x 75	TL3/33	TL2/33
100 x 25	TL3/41	TL2/41
100 x 40	TL3/440	TL2/440
100 x 50	TL3/42	TL2/42
100 x 75	TL3/43	TL2/43
100 x 100	TL3/44	TL2/44
150 x 25	TL3/61	TL2/61
150 x 40	TL3/640	TL2/640
150 x 50	TL3/62	TL2/62
150 x 75	TL3/63	TL2/63
150 x 100	TL3/64	TL2/64
150 x 150	TL3/66	TL2/66
200 x 25	TL3/81	TL2/81
200 x 40	TL3/840	TL2/840
200 x 50	TL3/82	TL2/82
200 x 75	TL3/83	TL2/83
200 x 100	TL3/84	TL2/84
200 x 150	TL3/86	TL2/86
200 x 200	TL3/88	TL2/88
225 x 25	TL3/91	TL2/91
225 x 40	TL3/940	TL2/940
225 x 50	TL3/92	TL2/92
225 x 75	TL3/93	TL2/93
225 x 100	TL3/94	TL2/94
225 x 150	TL3/96	TL2/96
225 x 200	TL3/98	TL2/98
225 x 225	TL3/99	TL2/99
300 x 25	TL3/121	TL2/121
300 x 40	TL3/1240	TL2/1240
300 x 50	TL3/122	TL2/122
300 x 75	TL3/123	TL2/123
300 x 100	TL3/124	TL2/124
300 x 150	TL3/126	TL2/126
300 x 200	TL3/128	TL2/128
300 x 225	TL3/129	TL2/129
300 x 300	TL3/1212	TL2/1212



Specifications

British Standard Complies with BS EN 50085.
Previously manufactured to BS4678 which is now withdrawn and superseded by BS EN 50085.

FULL TECHNICAL SUBMITTAL AVAILABLE ON REQUEST

Standard Finish Galvanised to BS EN 10346.

Special Finish Suffix /G.
Epoxy Powder coated to BS 4800 in colour of your choice.
Please state Colour Code when ordering.

Code Suffix /EP.

Standard Length 3.0 metres

Special Length 2.0 metres

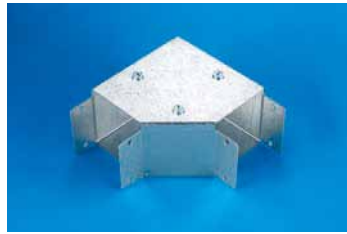
Each length comprises of trunking body, trunking lid (see below), 1 pair of couplers, 8 x (M5 x 8 screw and nut).

Screw Fixed Trunking

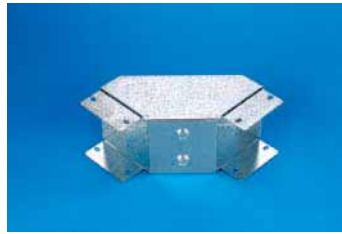
- Screw fixed trunking is fastened using a M5 pan head screw or security screw.
- Screw fixed trunking is only available to order.
- Specification is as per turnbuckle trunking.
- Order details – substitute T with S on all product codes.

Accessories

Gusset Bends



TB1/(Size)
Top Lid

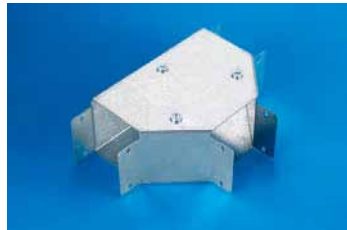


TB2/(Size)
Internal Lid



TB3/(Size)
External Lid

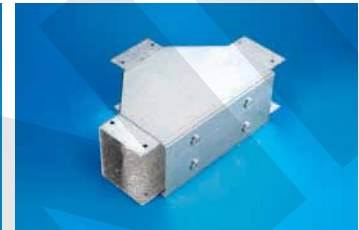
Gusset Tees



TT1/(Size)
Top Lid



TT2/(Size)
Internal Lid



TT3/(Size)
External Lid

Elbow Bends



TB1L/(Size)
Top Lid



TB2L/(Size)
Internal Lid



TB3L/(Size)
External Lid

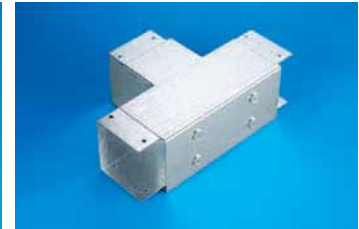
Elbow Tees



TT1L/(Size)
Top Lid



TT2L/(Size)
Internal Lid



TT3L/(Size)
External Lid

45° Bends



TH1/(Size)
Top Lid



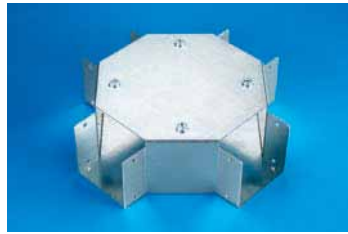
TH2/(Size)
Internal Lid



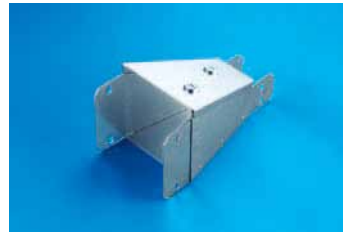
TH3/(Size)
External Lid

ORDERING DETAILS – e.g. Gusset bend with top lid for 50 x 50mm trunking.
Product Code TB1/+ Size 22 = TB1/22

Accessories



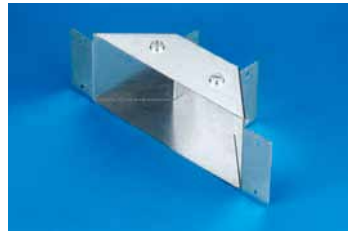
TX/(Size)
4-Way Crosspiece



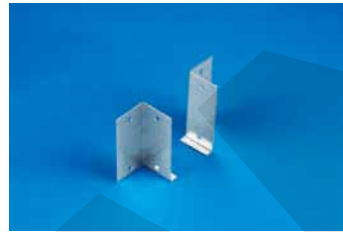
TR/(Size)/(Size)
Reducer



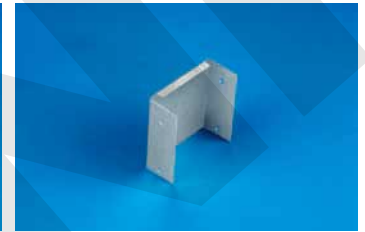
TCO/(Size)
Fitting Coupler



TFTC/(Size)
Flanged Tee Connector



TFC/(Size)
Flanged Connector



TSE/(Size)
Stop End



TSH/(Size)
Suspension Hanger
(11mm hole)



TSP/(Size)
Single Socket Plate
(290mm long)



TTP/(Size)
Twin Socket Plate
(290mm long)

Socket Plates are only available for 100mm–300mm wide trunking



TLC/(Size)
Long Sleeve Connector



TCR/(Size)
Cable Retainer



TPR/(Size)
Pin Rack



TEL100
Earth Link



TSC/(Size)
Standard Coupler



TFX100
Fixing Screws and Nuts

Multi-Compartment Trunking

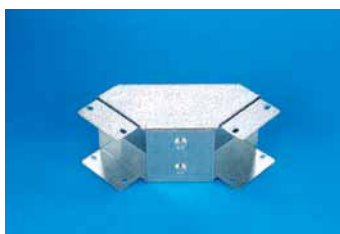
- Manufactured to the same specification as single compartment trunking.
- Partitions are spot welded into position
- Please specify compartment sizes at time of ordering



Trunking Size (mm) Width x Depth	Product Code		
	2 Compartment	3 Compartment	4 Compartment
75 x 40	TL3/340/2	-	-
75 x 50	TL3/32/2	-	-
75 x 75	TL3/33/2	-	-
100 x 40	TL3/440/2	-	-
100 x 50	TL3/42/2	TL3/42/3	-
100 x 75	TL3/43/2	TL3/43/3	-
100 x 100	TL3/44/2	TL3/44/3	-
150 x 40	TL3/640/2	TL3/640/3	TL3/640/4
150 x 50	TL3/62/2	TL3/62/3	TL3/62/4
150 x 75	TL3/63/2	TL3/63/3	TL3/63/4
150 x 100	TL3/64/2	TL3/64/3	TL3/64/4
150 x 150	TL3/66/2	TL3/66/3	TL3/66/4
200 x 40	TL3/840/2	TL3/840/3	TL3/840/4
200 x 50	TL3/82/2	TL3/82/3	TL3/82/4
200 x 75	TL3/83/2	TL3/83/3	TL3/83/4
200 x 100	TL3/84/2	TL3/84/3	TL3/84/4
200 x 150	TL3/86/2	TL3/86/3	TL3/86/4
200 x 200	TL3/88/2	TL3/88/3	TL3/88/4
225 x 40	TL3/940/2	TL3/940/3	TL3/940/4
225 x 50	TL3/92/2	TL3/92/3	TL3/92/4
225 x 75	TL3/93/2	TL3/93/3	TL3/93/4
225 x 100	TL3/94/2	TL3/94/3	TL3/94/4
225 x 150	TL3/96/2	TL3/96/3	TL3/96/4
225 x 200	TL3/98/2	TL3/98/3	TL3/98/4
225 x 225	TL3/99/2	TL3/99/3	TL3/99/4
300 x 40	TL3/1240/2	TL3/1240/3	TL3/1240/4
300 x 50	TL3/122/2	TL3/122/3	TL3/122/4
300 x 75	TL3/123/2	TL3/123/3	TL3/123/4
300 x 100	TL3/124/2	TL3/124/3	TL3/124/4
300 x 150	TL3/126/2	TL3/126/3	TL3/126/4
300 x 200	TL3/128/2	TL3/128/3	TL3/128/4
300 x 225	TL3/129/2	TL3/129/3	TL3/129/4
300 x 300	TL3/1212/2	TL3/1212/3	TL3/1212/4

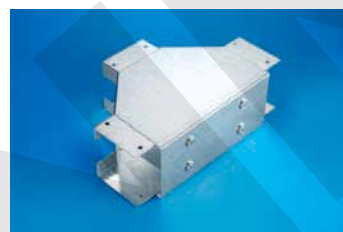
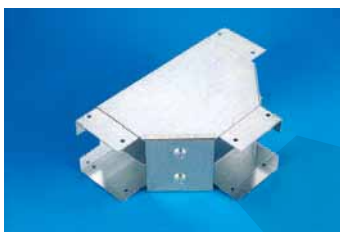
For 2m lengths substitute TL3 with TL2 on product code.

Accessories



Gusset Bends

TB1/(Size)/2 2-compartment * TB2/(Size)/2 2-compartment TB3/(Size)/2 2-compartment
 TB1/(Size)/3 3-compartment * TB2/(Size)/3 3-compartment TB3/(Size)/3 3-compartment
 TB1/(Size)/4 4-compartment * TB2/(Size)/4 4-compartment TB3/(Size)/4 4-compartment



Gusset Tees

TT1/(Size)/2 2-compartment * TT2/(Size)/2 2-compartment TT3/(Size)/2 2-compartment
 TT1/(Size)/3 3-compartment * TT2/(Size)/3 3-compartment TT3/(Size)/3 3-compartment
 TT1/(Size)/4 4-compartment * TT2/(Size)/4 4-compartment TT3/(Size)/4 4-compartment



Elbow Bends

TB1L/(Size)/2 2-compartment * TB2L/(Size)/2 2-compartment TB3L/(Size)/2 2-compartment
 TB1L/(Size)/3 3-compartment * TB2L/(Size)/3 3-compartment TB3L/(Size)/3 3-compartment
 TB1L/(Size)/4 4-compartment * TB2L/(Size)/4 4-compartment TB3L/(Size)/4 4-compartment



Elbow Tees

TT1L/(Size)/2 2-compartment * TT2L/(Size)/2 2-compartment TT3L/(Size)/2 2-compartment
 TT1L/(Size)/3 3-compartment * TT2L/(Size)/3 3-compartment TT3L/(Size)/3 3-compartment
 TT1L/(Size)/4 4-compartment * TT2L/(Size)/4 4-compartment TT3L/(Size)/4 4-compartment

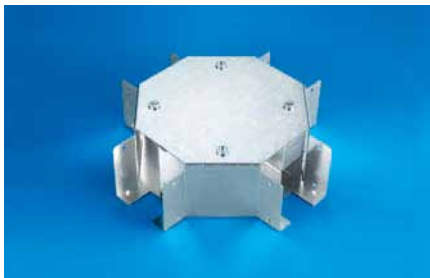


45° Bends

TH1/(Size)/2 2-compartment * TH2/(Size)/2 2-compartment TH3/(Size)/2 2-compartment
 TH1/(Size)/3 3-compartment * TH2/(Size)/3 3-compartment TH3/(Size)/3 3-compartment
 TH1/(Size)/4 4-compartment * TH2/(Size)/4 4-compartment TH3/(Size)/4 4-compartment

* When unequal compartments are specified, layouts on these accessories are required. See page 12.

Accessories



4-Way Cross Piece



Reducer



Fitting Coupler

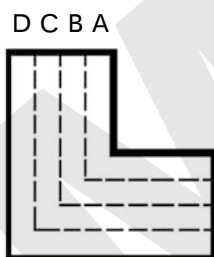
TX/(Size)/ 2 2-compartment * **TR**/(Size)/(Size)/2 2-compartment * **TCO**/(Size)/ 2 2-compartment
TX/(Size)/ 3 3-compartment * **TR**/(Size)/(Size)/3 3-compartment * **TCO**/(Size)/ 3 3-compartment
TX/(Size)/ 4 4-compartment * **TR**/(Size)/(Size)/4 4-compartment * **TCO**/(Size)/ 4 4-compartment

* When unequal compartments are specified, layouts on these accessories are required. See below.

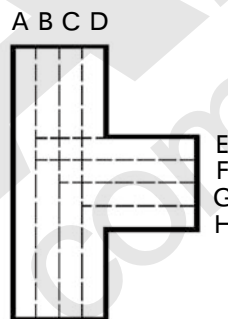
Flyovers are used on tees and 4-way crosspiece to maintain segregation. They are reversible being located by fixing clips supplied. (N.B. A flyover will always reduce the cable capacity by 50%.)

Full Capacity Tee and 4-Way Crosspiece are available on request.

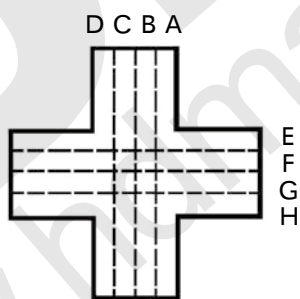
Unequal Compartment Layout



Flat Bends



Flat Tees



4-Way Cross Piece



Reducer

FOR:

2-compartment accessories please state a b e & f

3-compartment accessories please state a b c e f & g

4-compartment accessories please state a b c d e f g & h

ALL ABOVE DIMENSIONS MUST BE IN MILLIMETRES